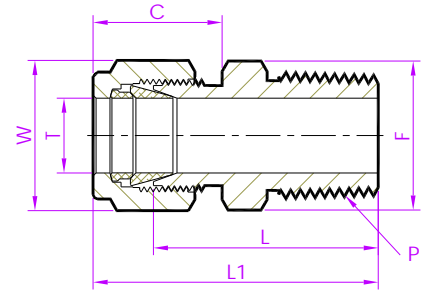
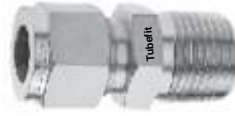


- Tube Fitting (Double Ferrule)-

Tube To Male Pipe Thread

Male Connector

(Thermocouple-Bore Through)



Fractional Tube x NPT (M)

TubeFit Part No.	Equivalent Part No. Type 1	Equivalent Part No. Type 2	TUBE OD Ø T	NPT Male Pipe Size P	C	L	L1	Body Hex F	Nut Hex W
Dimensions in Inches									
1 - MCBTD - 1N	- 100 - 1 - 1BT	1MTC1N	1/16	1/16	0.43	0.79	0.94	5/16	5/16
1 - MCBTD - 2N	- 100 - 1 - 2BT	1MTC2N		1/8		0.88	1.03	7/16	
1 - MCBTD - 4N	- 100 - 1 - 4BT	1MTC4N		1/4		1.07	1.22	9/16	
2 - MCBTD - 1N	- 200 - 1 - 1BT	2MTC1N	1/8	1/16	0.60	0.91	1.17	7/16	7/16
2 - MCBTD - 2N	- 200 - 1 - 2BT	2MTC2N		1/8		0.94	1.20	7/16	
2 - MCBTD - 4N	- 200 - 1 - 4BT	2MTC4N		1/4		1.14	1.40	9/16	
2 - MCBTD - 6N	- 200 - 1 - 6BT	2MTC6N		3/8		1.15	1.41	11/16	
2 - MCBTD - 8N	- 200 - 1 - 8BT	2MTC8N		1/2		1.40	1.66	7/8	
3 - MCBTD - 2N	- 300 - 1 - 2 BT	3MTC2N	3/16	1/8	0.63	0.97	1.23	7/16	1/2
3 - MCBTD - 4N	- 300 - 1 - 4BT	3MTC4N		1/4		1.17	1.43	9/16	
4 - MCBTD - 1N	- 400 - 1 - 1BT	4MTC1N	1/4	1/16	0.70	1.00	1.29	1/2	9/16
4 - MCBTD - 2N	- 400 - 1 - 2BT	4MTC2N		1/8		1.00	1.29	1/2	
4 - MCBTD - 4N	- 400 - 1 - 4BT	4MTC4N		1/4		1.20	1.49	9/16	
4 - MCBTD - 6N	- 400 - 1 - 6BT	4MTC6N		3/8		1.22	1.51	11/16	
4 - MCBTD - 8N	- 400 - 1 - 8BT	4MTC8N		1/2		1.47	1.76	7/8	
4 - MCBTD - 12N	- 400 - 1 - 12BT	4MTC12N		3/4		1.53	1.82	1.1/16	
5 - MCBTD - 2N	- 500 - 1 - 2BT	5MTC2N	5/16	1/8	0.73	1.05	1.34	5/8	5/8
5 - MCBTD - 4N	- 500 - 1 - 4BT	5MTC4N		1/4		1.23	1.52	5/8	
5 - MCBTD - 6N	- 500 - 1 - 6BT	5MTC6N		3/8		1.25	1.54	11/16	
6 - MCBTD - 2N	- 600 - 1 - 2BT	6MTC2N	3/8	1/8	0.76	1.10	1.39	11/16	11/16
6 - MCBTD - 4N	- 600 - 1 - 4BT	6MTC4N		1/4		1.28	1.57	11/16	
6 - MCBTD - 6N	- 600 - 1 - 6BT	6MTC6N		3/8		1.28	1.57	11/16	
6 - MCBTD - 8N	- 600 - 1 - 8BT	6MTC8N		1/2		1.53	1.82	7/8	
6 - MCBTD - 12N	- 600 - 1 - 12BT	6MTC12N		3/4		1.59	1.88	1.1/16	
8 - MCBTD - 2N	- 810 - 1 - 2BT	8MTC2N	1/2	1/8	0.86	1.13	1.53	13/16	7/8
8 - MCBTD - 4N	- 810 - 1 - 4BT	8MTC4N		1/4		1.31	1.71	13/16	
8 - MCBTD - 6N	- 810 - 1 - 6BT	8MTC6N		3/8		1.31	1.71	13/16	
8 - MCBTD - 8N	- 810 - 1 - 8BT	8MTC8N		1/2		1.53	1.93	7/8	
8 - MCBTD - 12N	- 810 - 1 - 12BT	8MTC12N		3/4		1.59	1.99	1.1/16	
8 - MCBTD - 16N	- 810 - 1 - 16BT	8MTC16N		1		1.85	2.25	1.3/8	
10 - MCBTD - 6N	- 1010 - 1 - 6BT	10MTC6N	5/8	3/8	0.86	1.34	1.74	1	1
10 - MCBTD - 8N	- 1010 - 1 - 8BT	10MTC8N		1/2		1.53	1.93	1	
10 - MCBTD - 12N	- 1010 - 1 - 12BT	10MTC12N		3/4		1.59	1.99	1.1/16	
12 - MCBTD - 8N	- 1210 - 1 - 8BT	12MTC8N	3/4	1/2	0.86	1.59	1.99	1.1/16	1.1/8
12 - MCBTD - 12N	- 1210 - 1 - 12BT	12MTC12N		3/4		1.59	1.99	1.1/16	
12 - MCBTD - 16N	- 1210 - 1 - 16BT	12MTC16N		1		1.85	2.25	1.3/8	
14 - MCBTD - 12N	- 1410 - 1 - 12BT	14MTC12N	7/8	3/4	0.86	1.59	1.99	1.3/16	1.1/4
14 - MCBTD - 16N	- 1410 - 1 - 16BT	14MTC16N		1		1.85	2.25	1.3/8	
16 - MCBTD - 8N	- 1610 - 1 - 8BT	16MTC8N	1	1/2	1.04	1.78	2.26	1.3/8	1.1/2
16 - MCBTD 12N	- 1610 - 1 - 12BT	16MTC12N		3/4		1.78	2.26	1.3/8	
16 - MCBTD - 16N	- 1610 - 1 - 16BT	16MTC16N		1		1.97	2.45	1.3/8	

NOTE : 1)Dimension L1, C is shown in the finger-tight position. 2)Dimensions are for reference only and are subject to change. 3)NPT thread as per ANSI B 1.20.1.

- ALL PART NUMBERS ARE PROPRIETARY OF THEIR RESPECTIVE OWNERS. -